

# EXTRUDED RUBBER CYLINDRICAL FENDERS

SIZE & PERFORMANCE GUIDE FOR ALL OF YOUR  
IMPACT PROTECTION NEEDS



ISO  
9001 : 2015  
REGISTERED



Manufacturers · Designers · Distributors

Experts in  
**Rubber**

# CYLINDRICAL FENDERS INFORMATION

## Key Features

- Simple & economical cylinder design
- Thick rubber wall resists abrasion & wear
- Progressive load-deflection cure
- Suitable for vessel and dock protection
- Choice of mounting system to suit application
- Supports a range of lengths & sizes
- Easy to install
- Long service life with minimal maintenance
- Wide range of sizes up to 2000mm diameter

## Potential Applications

- Bulk cargo berths
- Bow, side & stern of most vessels
- General cargo quays
- RoRo & ferry terminals
- Fishing & work boat berths
- Pontoons & floating structures
- Tug havens
- Barge protection



The Rubber Company manufacture and supply a wide selection of hollow cylindrical fenders for use in various marine applications. Our cylindrical fenders are perfect for use in applications which need protection from large objects and impact. We specifically design these fenders to offer the maximum compression rates possible without the fender warping or deteriorating.

## Ship & Vessel Fenders

Cylindrical ship fenders are typically mounted onto the hull of the ship using the suspended installation method. This method utilises a longitudinal chain, which provides continuous secure protection. We can also taper the ends of the fender in order to get a body blend connection to the hull of the sea vessel.

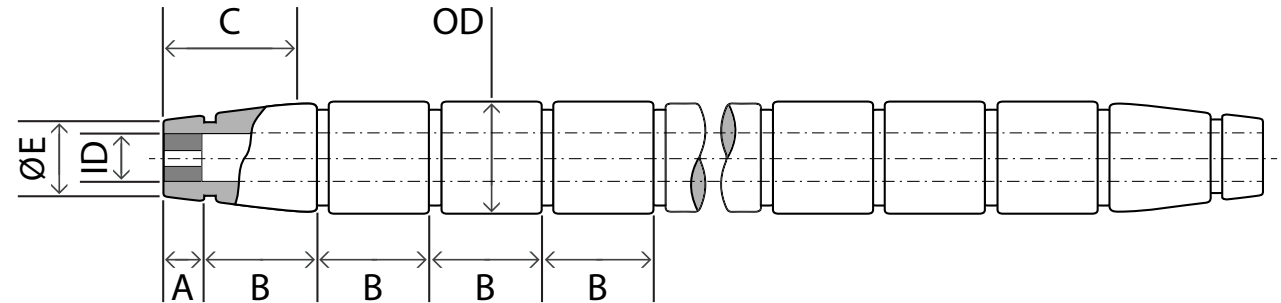
These particular fenders offer heavy duty protection against a wide variety of impacts. Due to their weight, they are commonly used on larger sea craft.

## Marina & Dock Fender Systems

We manufacture these fenders through a die using the extrusion method. This gives us greater control over the outcome of the product, which enables us to produce these fenders as small as 20mm OD all the way up to 2000mm OD. We can produce this product in various lengths to suit your unique requirements, (up to the maximum run length).

We also offer the option of pre-curving and drilling for these cylindrical fenders prior to dispatch.

# CYLINDRICAL SHIP & VESSEL FENDER SIZE GUIDE



Model	Outer Diameter	Inner Diameter	A	B	C	E
RC0801-200-SF	200	100	150	530	500	150
RC0801-250-SF	250	125	200	570	500	190
RC0801-300-SF	300	150	225	600	700	225
RC0801-380-SF	380	190	250	630	800	260
RC0801-400-SF	400	200	300	670	800	300
RC0801-500-SF	500	250	300	730	900	375
RC0801-600-SF	600	300	350	800	900	450
RC0801-700-SF	700	350	350	860	1000	525
RC0801-800-SF	800	400	350	930	1000	600
RC0801-900-SF	900	450	350	1000	1100	675
RC0801-1000-SF	1000	500	350	1000	1200	750

[Units: mm]

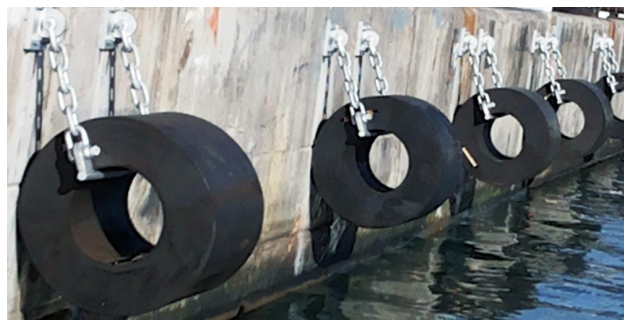




# CYLINDRICAL MARINA & DOCK FENDER SYSTEM SIZE GUIDE

Model	Outer Diameter	Inner Diameter	Chain Size	Steel Bar Size	Anchor Size
RC0802-150	150	75	16	25	25
RC0802-200	200	100	19	28	25
RC0802-250	250	125	19	28	25
RC0802-300	300	150	22	32	32
RC0802-350	350	175	22	32	32
RC0802-400	400	200	25	38	36
RC0802-500	500	250	25	42	40
RC0802-600	600	300	30	46	42
RC0802-700	700	350	32	50	46
RC0802-800	800	400	34	55	48
RC0802-900	900	450	34	55	48
RC0802-1000	1000	500	38	60	55
RC0802-1100	1100	550	38	60	55
RC0802-1200	1200	600	40	70	62
RC0802-1300	1300	650	42	70	62
RC0802-1400	1400	700	44	70	62
RC0802-1500	1500	750	46	70	66
RC0802-1600	1600	800	48	70	66
RC0802-1700	1700	850	50	70	66
RC0802-1800	1800	900	52	70	66
RC0802-1900	1900	950	54	70	66
RC0802-2000	2000	1000	56	70	66

[Units: mm]



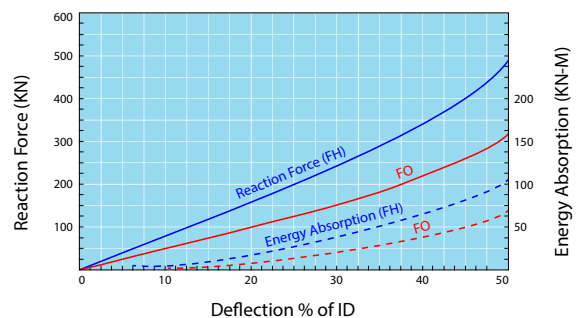
# CYLINDRICAL FENDER PERFORMANCE

Model		FH (50%)	FO (50%)
RC0802-150	E	2	1.5
	R	75	45
RC0802-200	E	4	2.7
	R	97	61
RC0802-250	E	6.6	4.1
	R	122	77
RC0802-300	E	9	6.1
	R	146	91
RC0802-350	E	13	8.2
	R	170	106
RC0802-400	E	17	10.2
	R	195	121
RC0802-500	E	26.5	16.3
	R	244	151
RC0802-600	E	27.5	24.5
	R	282	183
RC0802-700	E	51	31.6
	R	341	212
RC0802-800	E	67.3	41.8
	R	391	242
RC0802-900	E	85.7	53
	R	439	273

Model		FH (50%)	FO (50%)
RC0802-1000	E	105	65.3
	R	489	303
RC0802-1100	E	132	78.5
	R	539	338
RC0802-1200	E	155	96.9
	R	585	370
RC0802-1300	E	183	110
	R	635	400
RC0802-1400	E	212	131
	R	683	430
RC0802-1500	E	243	150
	R	732	460
RC0802-1600	E	288	180
	R	792	491
RC0802-1700	E	345	210
	R	840	521
RC0802-1800	E	414	252
	R	889	552
RC0802-1900	E	497	294
	R	938	581
RC0802-2000	E	596	327
	R	1075	666

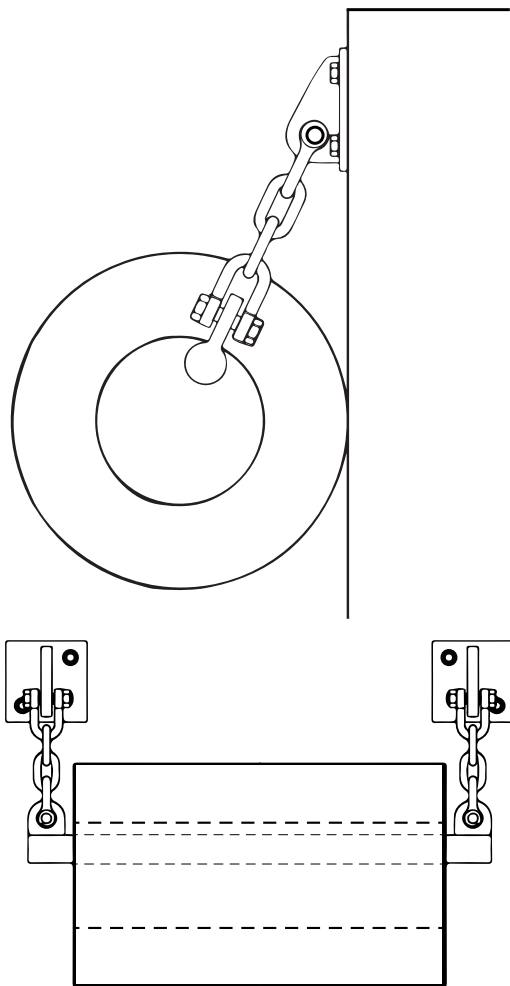
[Units: kNm, kN]

FH: High Reaction Force  
 FO: Standard Reaction Force  
 E: Energy Absorption  
 R: Reaction Force

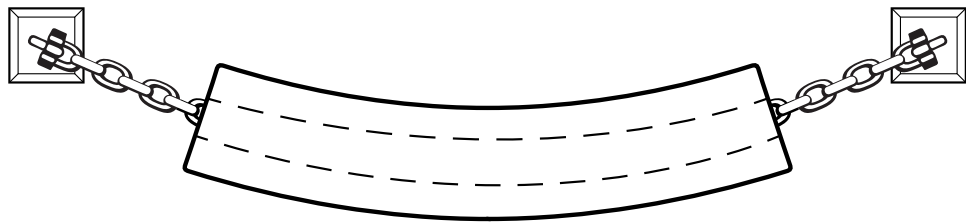
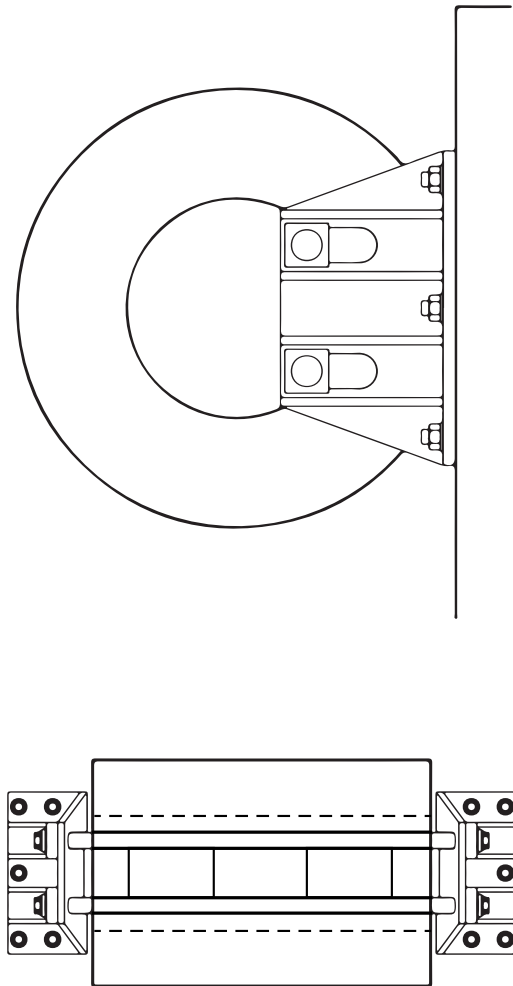


# CYLINDRICAL FENDER INSTALLATION SYSTEM GUIDE

## Chain Installation System



## Bracket Installation System



# ALTERNATIVE MARINE SAFETY PRODUCTS WE OFFER

Aside from our cylindrical fenders The Rubber Company can also supply a wide range of impact absorption and protection products, which have been designed specifically for marine applications. We always manufacture our products using the highest quality compounds available in order to ensure that you get a product, which is fit for purpose and made to last.

With over 75 years of experience, we have a broad knowledge of the demands of the marine industries. However, we also understand that every application is different and we will work with you to ensure that you get the perfect product to match your unique requirements.

Some of our most popular marine safety products include:

- **D Fenders**
- **Arch Fenders**
- **Cell Fenders**
- **Cone Fenders**
- **Floating Fenders**
- **Fender Bars**
- **UHMW-PE Sliding Fenders**

Don't hesitate to contact us for:

Rubber Extrusion Poster



Materials Sample Card - Gaskets, Seals, Washer, Sheet & Strip



# Experts in Rubber

Safety Matting  
Extrusions  
Fabrications  
Hatch Seals  
Mouldings  
Sheeting  
Sponge & Foam  
Gaskets & Seals  
Hose & Ducting  
Noise Insulation  
Custom Parts

Call us now: +44 (0) 1794 513 184



Working with companies  
worldwide



The Rubber Company Limited Registered in England and Wales  
TRC House, Romsey Industrial Estate, Greatbridge Road,  
Romsey, Hampshire, SO51 0HR United Kingdom  
Company Number 08350831 | VAT Number GB 156 8355 80