

RubbaDot Fireproof Rubber Flooring

Product Code: RC-RUBBADOT

Key Features

- Bfl-s1 fire rated (EN 13501-1)
- Low smoke production (s1 classification)
- Up to 16 dB acoustic sound reduction
- Non-slip hammered surface finish
- Anti-static & cigarette burn resistant
- PVC, halogen & plasticiser free

Attributes



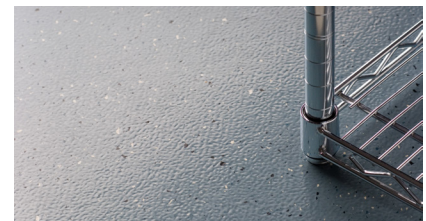
Flame Retardant



Anti-Slip



Durable



Technical Data

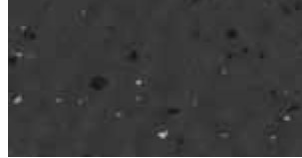
Property	Test Method	Requirements	Value	
			RC-RUBBADOT-S	RC-RUBBADOT-AUTO
Thickness	EN ISO 24346	± 0.15mm max	2.5mm	5mm
Hardness (Shore A)	EN ISO 7619-1	≥ 75° Shore A	88° ± 3°	
Abrasion Resistance (@ 5N Load)	ISO 4649	≤ 250mm ³	160 mm ³	
Residual Indentation	EN ISO 24343	< 2.5mm thickness	0.05mm	0.15mm
Dimensional Stability	EN ISO 23999	± 0.4 %	± 0.3 %	
Flexibility	EN ISO 24344	20mm dia mandrel	No fissuring	
Tear Strength	ISO 34-1	Mean value ≥ 20 N/mm	Pass	-
Colour Fastness	ISO 105-B02	At least level 6 on the blue scale; ≥ level 3 on the grey scale (=350 MJ/m ²)	Pass	
Cigarette Burn Resistance	EN 1399	Procedure A (stubbed out) level ≥ 4 Procedure B (burning) level ≥ 3	Pass	
Smoke Toxicity	BS 6853 Ann. B.2	≤ 5 R	Pass	
Classification	EN ISO 10874	Residential/Commercial/Industrial	23/32/42	23/34/43
Thermal Conductivity	DIN 52 612	-	0.022 m ² K/W	0.030 m ² K/W
Chemical Resistance	EN ISO 26987	-	Resistant depending on concentration and time of exposure	
Sound Absorption	EN ISO 10140-3	-	6 dB	16 dB
Electrical Insulation	IEC 60093	-	> 10 ¹⁰ Ohm	
Electrical Propensity (When Walked Upon)	EN 1815	-	Anti-static charging in case of rubber soles ≤ 2 KV	
Effect of Castor Chair	EN 425	-	Suitable for castor wheels type W, according to EN 12529	
Slip Resistance	EN 13 893	≥ 0.30 DS	DS	
Reaction to Fire	EN 13 501-1	-	Bfl - s1	

The information contained on this product information sheet is to be used as guidance. The advice is given in good faith and does not constitute any guarantee or recommendation for suitability. The Rubber Company cannot be held liable for any damage caused by incorrect installation. We hereby reserve the right to change the technical information herewith without notification or prior agreement.

Colour Range



RC-S122



RC-S32



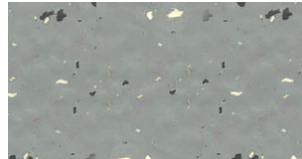
RC-S113



RC-S110



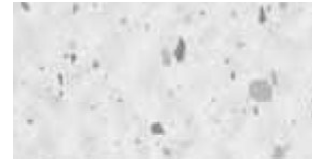
RC-S108



RC-S13



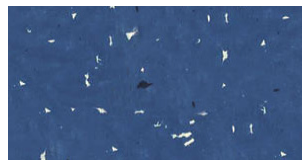
RC-S107



RC-S101



RC-S121



RC-S12



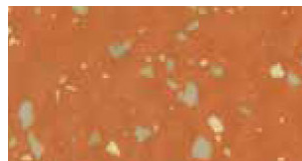
RC-S20



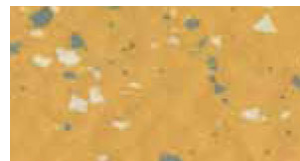
RC-S115



RC-S124



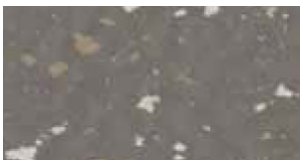
RC-S118



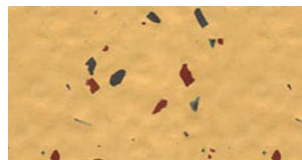
RC-S112



RC-S106



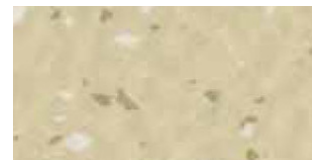
RC-S117



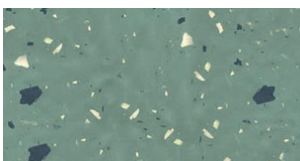
RC-S17



RC-S111



RC-S105



RC-S11



RC-S103

The information contained on this product information sheet is to be used as guidance. The advice is given in good faith and does not constitute any guarantee or recommendation for suitability. The Rubber Company cannot be held liable for any damage caused by incorrect installation. We hereby reserve the right to change the technical information herewith without notification or prior agreement.

Standard Sizes

Property	Tile Size	Thickness	Weight
RC-RUBBADOT-S	500mm x 500mm , 1000mm x 1000mm	2.5mm 3.5mm	4.00 kg/m ² 5.50 kg/m ²
RC-RUBBADOT-AUTO	500mm x 500mm	6mm	8.30 kg/m ²

The information contained on this product information sheet is to be used as guidance. The advice is given in good faith and does not constitute any guarantee or recommendation for suitability. The Rubber Company cannot be held liable for any damage caused by incorrect installation. We hereby reserve the right to change the technical information herewith without notification or prior agreement.