

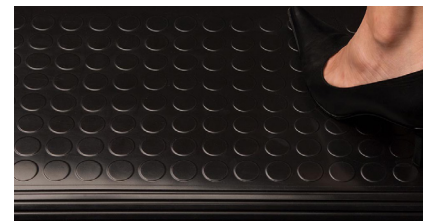
## RubbaStud Fireproof Rubber Flooring

Product Code: RC-RUBBASTUD

### Key Features

- Bfl-s1 fire rated (EN 13501-1)
- Low smoke production (s1 classification)
- Up to 10 dB acoustic sound reduction
- Non-slip studded surface finish
- Anti-static & cigarette burn resistant
- PVC, halogen & plasticiser free

### Attributes



### Technical Data

Property	Test Method	Requirements	Value	
			RC-RUBBASTUD-2.7	RC-RUBBASTUD-4
Thickness	EN ISO 24346	± 0.20mm max	2.7mm	4mm
Hardness (Shore A)	EN ISO 7619-1	≥ 75° Shore A	88° ± 3°	
Abrasion Resistance (@ 5N Load)	ISO 4649	≤ 250mm <sup>3</sup>	170 mm <sup>3</sup>	
Residual Indentation	EN ISO 24343	< 2.5mm thickness	0.08mm	0.12mm
Dimensional Stability	EN ISO 23999	± 0.4 %	± 0.3 %	
Flexibility	EN ISO 24344	20mm dia mandrel	No fissuring	
Tear Strength	ISO 34-1	Mean value ≥ 20 N/mm	Pass	
Colour Fastness	ISO 105-B02	At least level 6 on the blue scale; ≥ level 3 on the grey scale (=350 MJ/m <sup>2</sup> )	Pass	
Cigarette Burn Resistance	EN 1399	Procedure A (stubbed out) level ≥ 4 Procedure B (burning) level ≥ 3	Pass	
Smoke Toxicity	BS 6853 Ann. B.2	≤ 5 R	Pass	
Classification	EN ISO 10874	Residential/Commercial/Industrial	23/32/41	23/34/43
Thermal Conductivity	DIN 52 612	-	0.015 m <sup>2</sup> K/W	0.020 m <sup>2</sup> K/W
Chemical Resistance	EN ISO 26987	-	Resistant depending on concentration and time of exposure	
Sound Absorption	EN ISO 10140-3	-	8 dB	10 dB
Electrical Insulation	IEC 60093	-	> 10 <sup>10</sup> Ohm	
Electrical Propensity (When Walked Upon)	EN 1815	-	Anti-static charging in case of rubber soles ≤ 2 KV	
Effect of Castor Chair	EN 425	-	Suitable for castor wheels type W, according to EN 12529	
Slip Resistance	EN 13 893	≥ 0.30 DS	DS	
Reaction to Fire	EN 13 501-1	-	Bfl - s1	

The information contained on this product information sheet is to be used as guidance. The advice is given in good faith and does not constitute any guarantee or recommendation for suitability. The Rubber Company cannot be held liable for any damage caused by incorrect installation. We hereby reserve the right to change the technical information herewith without notification or prior agreement.

## RC-RUBBASTUD-2.7 Colour Range



RC-EN21



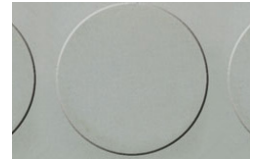
RC-EG84



RC-EG6



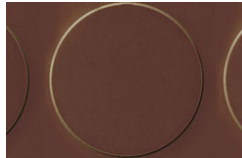
RC-EG4



RC-EG8



RC-EM22



RC-EM3



RC-ER2



RC-ER75



RC-EA1



RC-EY78



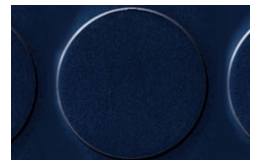
RC-EV5



RC-EV18



RC-EV73



RC-EB65



RC-EB15

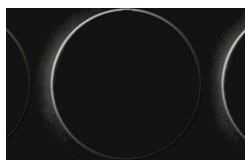


RC-EB9

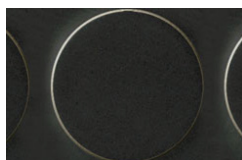


RC-EB51

## RC-RUBBASTUD-4 Colour Range



RC-EN21



RC-EG84



RC-EG6



RC-EG4



RC-EG8



RC-ER75



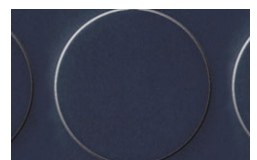
RC-EA1



RC-EY78



RC-EV5



RC-EB15

The information contained on this product information sheet is to be used as guidance. The advice is given in good faith and does not constitute any guarantee or recommendation for suitability. The Rubber Company cannot be held liable for any damage caused by incorrect installation. We hereby reserve the right to change the technical information herewith without notification or prior agreement.

## Standard Sizes

Property	Tile Size	Thickness	Weight
RC-RUBBASTUD-2.7	500mm x 500mm	2.7mm	4.00 kg/m <sup>2</sup>
RC-RUBBASTUD-4	1000mm x 1000mm	4mm	5.20 kg/m <sup>2</sup>

The information contained on this product information sheet is to be used as guidance. The advice is given in good faith and does not constitute any guarantee or recommendation for suitability. The Rubber Company cannot be held liable for any damage caused by incorrect installation. We hereby reserve the right to change the technical information herewith without notification or prior agreement.