

RubbaWave Fireproof Rubber Flooring

Product Code: RC-RUBBAWAVE

Key Features

- Bfl-s1 fire rated (EN 13501-1)
- Low smoke production (s1 classification)
- Up to 16 dB acoustic sound reduction
- Textured hammered anti-slip surface
- PVC, halogen & plasticiser free
- High durability & abrasion resistance

Attributes



Flame Retardant



Anti-Slip



Durable



Technical Data

Properties	Test Method	Requirements	Values		
			RC-RUBBAWAVE-UNIFLOOR	RC-RUBBAWAVE-UNIFLOOR-AUTO	RC-RUBBAWAVE-DUOFLOOR
Thickness	EN ISO 24346	± 0.15mm max	2.5mm	5.0mm	2.5mm 3.5mm
Hardness (Shore A)	EN ISO 7619-1	≥ 75° Shore A	88° ± 3°		
Abrasion Resistance (@ 5N Load)	ISO 4649	≤ 250mm³	160 mm³		
Residual Indentation	EN ISO 24343	< 2.5mm thickness	0.05mm	0.15mm	0.05mm
Dimensional Stability	EN ISO 23999	± 0.4 %	± 0.3 %		
Flexibility	EN ISO 24344	20mm dia mandrel	No fissuring		
Tear Strength	ISO 34-1	Mean value ≥ 20 N/mm	Pass		
Colour Fastness	ISO 105-B02	At least level 6 on the blue scale; ≥ level 3 on the grey scale (=350 Mj/m²)	Pass		
Cigarette Burn Resistance	EN 1399	Procedure A (stubbed out) level ≥ 4 Procedure B (burning) level ≥ 3	Pass		
Smoke Toxicity	BS 6853 Ann. B.2	≤ 5 R	Pass		
Classification	EN ISO 10874	Residential/Commercial/Industrial	23/32/42	23/34/43	23/32/42
Thermal Conductivity	DIN 52 612	-	0.022 m² K/W	0.03 m² K/W	0.022 m² K/W
Chemical Resistance	EN ISO 26987	-	Resistant depending on concentration and time of exposure		
Sound Absorption	EN ISO 10140-3	-	6 dB	16 dB	6 dB
Electrical Insulation	IEC 60093	-	> 10 ¹⁰ Ohm		
Electrical Propensity (When Walked Upon)	EN 1815	-	Anti-static charging in case of rubber soles ≤ 2 KV		
Effect of Castor Chair	EN 425	-	Suitable for castor wheels type W, according to EN 12529		
Slip Resistance	EN 13 893	≥ 0.30 DS	DS		
Reaction to Fire	EN 13 501-1	-	Bfl - s1		

The information contained on this product information sheet is to be used as guidance. The advice is given in good faith and does not constitute any guarantee or recommendation for suitability. The Rubber Company cannot be held liable for any damage caused by incorrect installation. We hereby reserve the right to change the technical information herewith without notification or prior agreement.

RC-RUBBAWAVE-UNIFLOOR & UNIFLOOR AUTO Colour Range

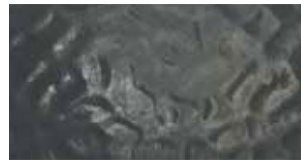
Solid colour rubber flooring with hammered surface. UniFloor has a roughened underside for strong adhesive bonding whilst UniFloor-Auto is a loose-laying system designed for installation using a suitable peelable adhesive system.



RC-UF21



RC-UF32



RC-UF113



RC-UF110



RC-UF13



RC-UF107



RC-UF117



RC-UF111



RC-UF105



RC-UF124



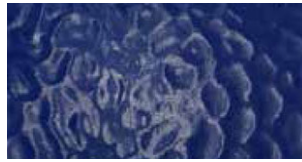
RC-UF118



RC-UF106



RC-UF125



RC-UF114



RC-UF121



RC-UF20



RC-UF115



RC-UF103

The information contained on this product information sheet is to be used as guidance. The advice is given in good faith and does not constitute any guarantee or recommendation for suitability. The Rubber Company cannot be held liable for any damage caused by incorrect installation. We hereby reserve the right to change the technical information herewith without notification or prior agreement.

RC-RUBBAWAVE-DUOFLOOR Colour Range

Hammered surface flooring featuring a tone-on-tone speckled design with roughened underside for adhesive bonding.



RC-DF32



RC-DF110



RC-DF107



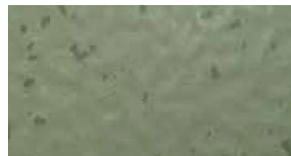
RC-DF117



RC-DF105



RC-DF11



RC-DF126



RC-DF103



RC-DF125



RC-DF114



RC-DF12



RC-DF20



RC-DF115



RC-DF512



RC-DF124



RC-DF118



RC-DF112



RC-DF106

Standard Sizes

Property	Tile Size	Thickness	Weight
RC-RUBBAWAVE-UNIFLOOR	500mm x 500mm, 1000mm x 1000mm	2.5mm	4.00 kg/m ²
	500mm x 500mm, 1000mm x 1000mm	3.5mm	5.50 kg/m ²
RC-RUBBAWAVE-UNIFLOOR-AUTO	500mm x 500mm	6.0mm	8.30 kg/m ²
RC-RUBBAWAVE-DUOFLOOR	500mm x 500mm, 1000mm x 1000mm	2.0mm	4.00 kg/m ²
	500mm x 500mm, 1000mm x 1000mm	3.5mm	5.50 kg/m ²

The information contained on this product information sheet is to be used as guidance. The advice is given in good faith and does not constitute any guarantee or recommendation for suitability. The Rubber Company cannot be held liable for any damage caused by incorrect installation. We hereby reserve the right to change the technical information herewith without notification or prior agreement.